

Arcopearl FEHD

Synthetic mica based pearlescent pigment

1
ORIGINALITY
(Patented)

- ✓ Higher value of chroma and brightness.
- ✓ Uniquely designed outward appearance color.

Structure



Arcopearl FEHD structure



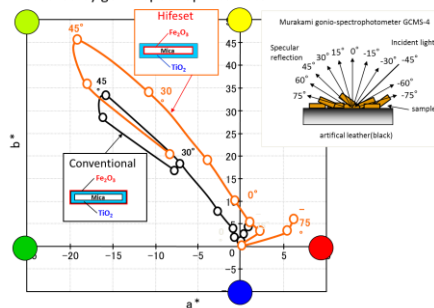
Conventional structure

✘Metallic oxide layer structure is different from conventional

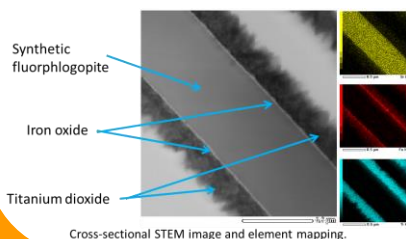
Performance

High chroma compare to conventional

Color locus of interference pearl by the laminating pattern measured by gonio-spectrophotometer



✘Further distance from the zero point shows higher chroma (actual data)



2
SAFETY

Global compliancy of heavy metal values

USA EU China Korea ASEAN Taiwan Japan(conform to JSQI)

Guarantee 8 values

| Items | Guaranteed Value (ppm) | Items | Guaranteed Value (ppm) |
|---------------|------------------------|---------------|------------------------|
| Antimony (Sb) | 5 max | Mercury (Hg) | 1 max |
| Arsenic (As) | 1 max | Cobalt (Co) | 1 max |
| Lead (Pb) | 2 max | Nickel (Ni) | 20 max |
| Cadmium (Cd) | 1 max | Chromium (Cr) | 20 max |

3
Product
LINE-UP

| Type | Particle size (μm) | | Color | | | | | |
|------------|---------------------------|-------|--------|-------------------|------------------|---------------------|-------------------|--------------------|
| | Range | Ave. | Silver | Interference Gold | Interference Red | Interference Violet | Interference Blue | Interference Green |
| 400 series | 20-80 | ca.37 | 400 | 410 | 420 | 430 | 440 | 450 |
| 500 series | 40-200 | ca.90 | 500 | 510 | 520 | 530 | 540 | 550 |

INCI: SYNTHETIC FLUORPHLOGOPITE, TITANIUM DIOXIDE, IRON OXIDES, TIN OXIDE
TiO2 crystal structure: Rutile